

Pt Townsend
 Total visits: 375
 Total # of clients: 143
 Avg visit/client: 2.62
 Range: 1 to 8
 Days open: 74.5

Chimacum
 Total Visits: 377
 Total # of clients: 144
 Avg visit/client: 2.62
 Range: 1 to 16
 Days open: 71.5



Based on enrollment numbers, **41% of CHS students** and **30% of PTHS students** utilized SBHC physical health services during the 2012-2013 school year.

Gender	% of clients at first visit	
	PTHS	CHS
Female	63%	75%
Male	37%	25%

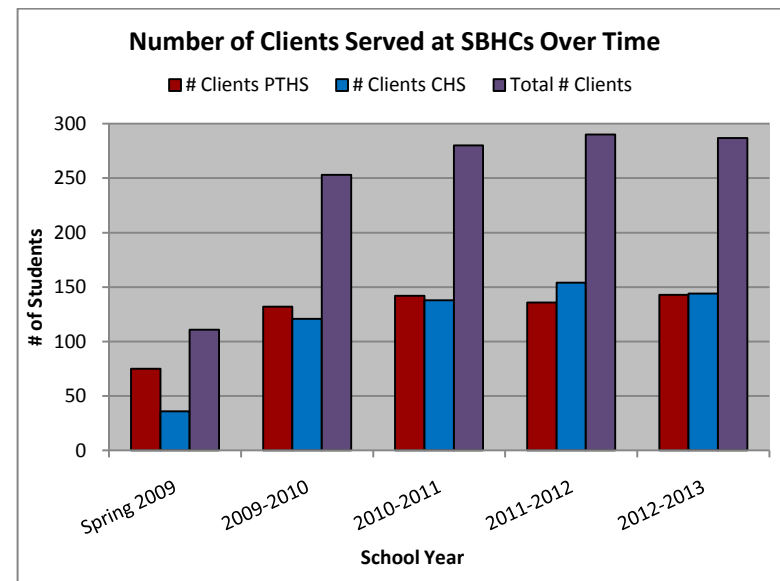
The total number of clients in 2012-13 is similar to 2011-12, but total visits decreased; a contributing factor could be that a schedule reduction due to a switch to EMR occurred.

Since the 2009-10 school year, the number of clients seen at the SBHCs has increased 12%.

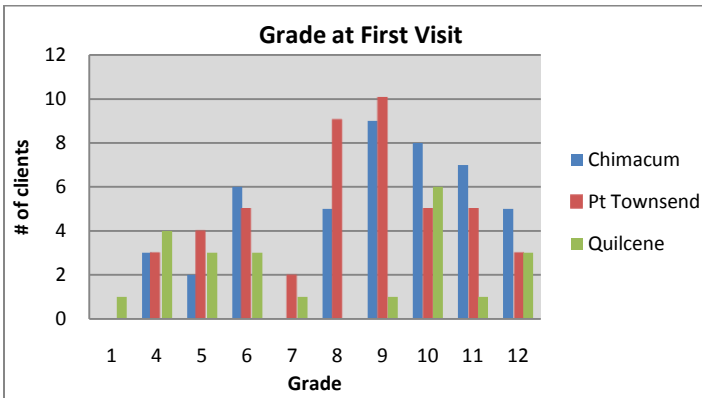
Top Reasons for Physical Health Visits

Student Concern:	Clinician Addressed:
Reproductive Health	Reproductive Health
Sports Physical	Relationships
Immunizations	Family
Infection	School Performance
Family	Eating/weight concerns

During the 2012-2013 school year, 201 referrals were made by SBHC medical clinic staff. Common referrals included mental health services, dental services, emergency housing and food services, juvenile services, and insurance programs.



2012-2013 School-Based Health Center Mental Health Data Summary



Chimacum
 Total visits: 386
 Total # of clients: 62
 Av visits/client: 6.2
 Range: 1 to 20
 Total days: 79

Pt Townsend
 Total visits: 303
 Total # of clients: 57
 Av visits/client: 5.3
 Range: 1 to 26
 Total days: 83

Quilcene
 Total visits: 347
 Total # of clients: 24
 Av visits/client: 14.5
 Range: 1 to 48
 Total days: 69

Based on enrollment, **9% of Chimacum, 5% of Pt Townsend, and 14% of Quilcene** 9-12th grade students utilized SBHC mental health services during the 2012-2013 school year.

Gender	% of clients at first visit		
	Pt Townsend	Chimacum	Quilcene
Female	78%	74%	52%
Male	22%	26%	48%

The total visits in 2012-13 compared to 2011-12 are up in Chimacum and Port Townsend and similar in Quilcene.

Compared to the 2009-10 school year, the number of individuals seen for mental health services has increased over 100% and the number of visits has increased nearly 200%!

Top Reasons for SBHC MH Visits:			
	Chimacum	Port Townsend	Quilcene
Student Concern	Stress	Stress	Stress
	Family	Family	Court diversion
	Relationships	Relationships	Relationships
	School	School	Family
	Depression	Anger	--
% of total	86%	83%	100%
Clinician Issue Addressed	Family	Family	Family
	Relationships	Relationships	School
	School	Self esteem	Self esteem
	Mental health	Stress	Grief
	Self esteem	Depression	Stress
% of total	70%	68%	78%

