

**SAMPLE Ballot - Jefferson County, WA  
Special Election Tuesday, February 14, 2023**

**↓ START VOTING HERE**

**Instructions**

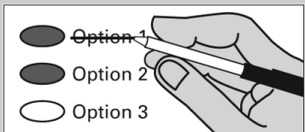
**How to vote**



Use a dark blue or black ink pen to completely fill in the oval to the left of your choice.

Vote for one in each race. If you vote for more than one, no votes will be counted for that race.

**If you make a mistake**



Draw a line through the entire measure response or candidate's name.

Then you may make another choice.

**Additional Information**

Sign and date the voter's declaration on the return envelope. For a replacement ballot, contact the Jefferson County Auditor's Office at (360)385-9119. Deposit your ballot in a ballot drop box no later than 8:00 p.m. Election Day or mail. It must be postmarked on or before Election Day.

For a list of the people and organizations that donated to state and local candidates and ballot measure campaigns, visit [www.pdc.wa.gov](http://www.pdc.wa.gov)

**Local Measures**

**Proposition No. 1**

**Jefferson County Fire Protection District No. 1 (East Jefferson Fire Rescue) Levy Lid Lift**

The Board of Jefferson County Fire Protection District No. 1 (East Jefferson Fire Rescue) adopted Resolution No. 22-13 concerning a proposition to establish its regular property tax levy. This proposition authorizes the District to establish its regular property tax levy to \$1.30 per \$1,000 of assessed value to be assessed in 2023 and collected in 2024. The funds will maintain and improve fire protection, and emergency medical services, replace apparatus and equipment, and provide for firefighter safety. The dollar amount of the 2023 levy collected in 2024 shall serve as the base for computing subsequent levy limitations as provided by chapter 84.55 RCW.

Should this Proposition be:

- Approved
- Rejected

**Proposition No. 2**

**Jefferson County Fire Protection District No. 1 (East Jefferson Fire Rescue) Emergency Medical Services Levy Lid Lift**

The Board of Jefferson County Fire Protection District No. 1 (East Jefferson Fire Rescue) adopted Resolution No. 22-12 concerning a proposition to restore its Emergency Medical Services regular property tax levy. This proposition authorizes the District to restore its regular EMS property tax levy to \$.50 per \$1,000 of assessed value to be assessed in 2023 and collected in 2024. The funds will maintain and improve emergency medical services. The maximum allowable levy in 2023 levy collected in 2024, shall serve as the base for computing subsequent levy limitations as provided by chapter 84.55 RCW.

Should this Proposition be:

- Approved
- Rejected

**Proposition No. 1**

**Jefferson County Fire Protection District No. 4 Proposition Authorizing Regular Property Tax Levy**

The elected Commissioners of Jefferson County Fire Protection District No. 4 adopted Resolution No. 2022-10 on December 13, 2022, which authorized putting before the Fire Protection District's qualified voters a proposition that would, if approved, establish a regular property tax levy of \$1.50 per \$1,000.00 of assessed valuation for the support of the General Fund maintenance and operations expenses of the Fire Protection District, for the purpose of computing the limitations for subsequent levies beginning in 2023 for collection in 2024. (This proposition shall not be construed to authorize an excess levy and shall be subject to otherwise applicable statutory limits.)

Should Proposition No. 1 be approved?

- Approved
- Rejected

**Proposition No. 2**

**Jefferson County Fire Protection District No. 4 Proposition Authorizing Regular Property Tax Levy**

The elected Commissioners of Jefferson County Fire Protection District No. 4 adopted Resolution No. 2022-11 on December 13, 2022, which authorized putting before the Fire Protection District's qualified voters a proposition that would, if approved, establish a regular property tax levy of \$0.50 per \$1,000.00 of assessed valuation for the support of the Emergency Medical Services Fund maintenance and operations expenses of the Fire Protection District, for the purpose of computing the limitations for subsequent levies beginning in 2023 for collection in 2024. (This proposition shall not be construed to authorize an excess levy and shall be subject to otherwise applicable statutory limits.)

Should Proposition No. 2 be approved?

- Approved
- Rejected

**Special Note: This is an "EXAMPLE" of your ballot.  
The ballot you receive will have the measures based on your residence address.**